



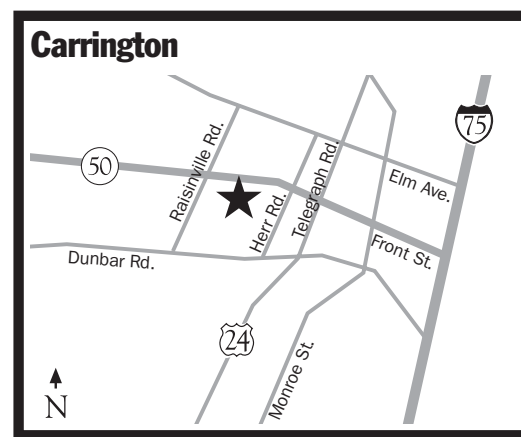
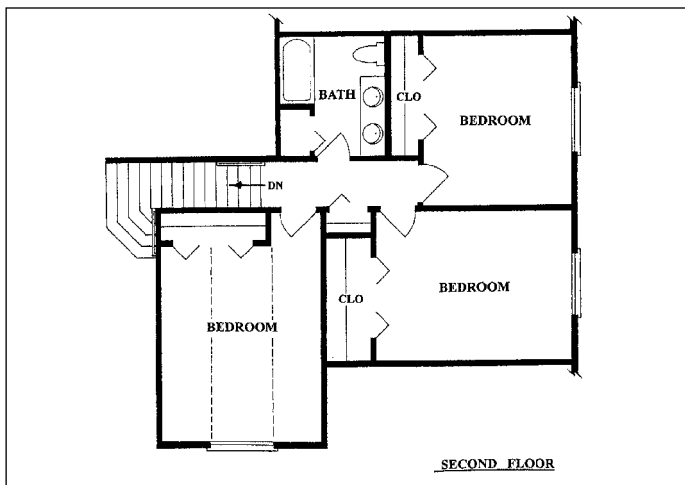
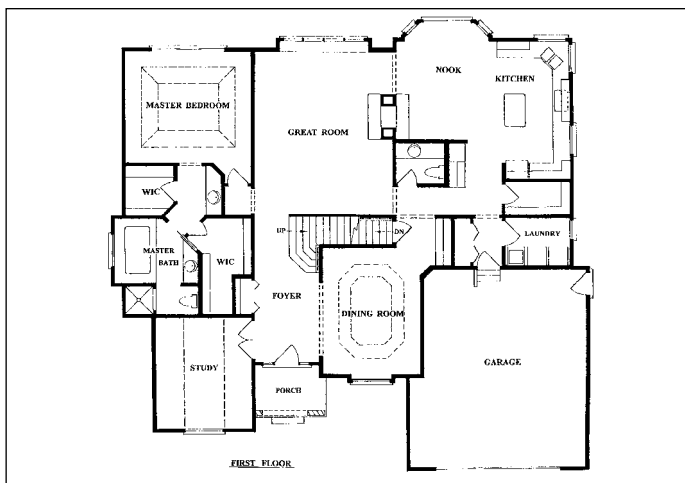
Carrington Fairways

1033 St. James Park, Monroe



SUBCONTRACTORS

- ❖ Alarm Concepts
- ❖ Dave's Complete Lawn Care
- ❖ Angelo & Sons Foundations
- ❖ Automated Building Components, Inc.
- ❖ B & G Construction
- ❖ Britt Irrigation
- ❖ Brooks Brothers Tile
- ❖ Carter Carpets & Vinyl
- ❖ Carter Plastics
- ❖ Closet Creations
- ❖ D & C Plumbing Supply
- ❖ Delta
- ❖ Doug Gere Carpentry
- ❖ Finishers Unlimited
- ❖ GE Appliances
- ❖ General Shale Brick
- ❖ Glass Unlimited
- ❖ Great Lakes Glass Block
- ❖ Gross Electric
- ❖ H & H Heating & Cooling
- ❖ J.M. Custom Woodworking
- ❖ J.M. Excavating
- ❖ J.M.J. Development Corp.
- ❖ Jerry Flatt
- ❖ Jerry Stamp Sheet Metal
- ❖ Ken Woods Drywall
- ❖ Kitchen Suppliers, Inc.
- ❖ LaRoy Door & Contracting
- ❖ M. S. Distributors
- ❖ Mans Lumber & Millwork
- ❖ Michigan Roofing Systems
- ❖ Milan Burial Vault, Inc.
- ❖ Modern Builders Supply, Inc.
- ❖ Monroe Bank & Trust
- ❖ P & R Electric Co.
- ❖ Pella Window Store
- ❖ Peter Simon, Inc.
- ❖ Preferred Building Materials
- ❖ R & D Masonry
- ❖ Sharpe Design
- ❖ Smede-Son Steel
- ❖ Splendor Shower Door
- ❖ Suburban Insulation
- ❖ Vasquez Custom Masonry & Stonework
- ❖ Wilson Tile & Stone



Olah Custom Homes
Dave Olah
8920 Quail Circle
Plymouth, MI 48170
734-242-8950
Fax: 734-242-3312
Cell: 734-645-3100

- 2950 sq. ft.
- 4 bedrooms - 2 1/2 baths
- 80x142 lot
- Carrier 92+ gas furnace
- Pella windows
- Brick/vinyl siding
- Merillat glazed maple cabinetry
- Hardwood/carpet flooring
- 9' high basement with roughed-in bath
- See-through cultured stone fireplace
- Granite countertops
- Painted poplar trim
- 23x28 garage
- Courtyard patio

Welcome to the Biltmore - Olah Homes 2005 Home Tour entry!

“Warm elegance” might best describe this year's entry.

Located in the Carrington Golf Community of fine homes and backing up to the 18th fairway, this 2,950 sq. ft. four bedroom residence features a first floor master suite. The foyer showcases a wrap-around maple staircase with bronze-veined wrought iron balusters highlighted by the dark walnut floors that lead into the kitchen and nook area. The kitchen boasts Merillat glazed maple cabinetry with granite countertops, GE stainless steel appliances that are a gourmet chef's dream, an abundance of cabinet and pantry storage, and a rustic stone see-through fireplace. The dining room includes a three-tiered octagon tray ceiling and an elegant butler's pantry for entertaining ease. You'll enjoy the master suite which

includes hers and mostly hers walk-in closets and subtle accent lighting built into the tray ceiling. The master bath completes this area with separate his and her vanities and a luxurious whirlpool tub and shower combination with designer ceramic tile.

Relax on the rear courtyard and enjoy the view while having a cookout with family and friends, or letting the golfers keep you entertained!