



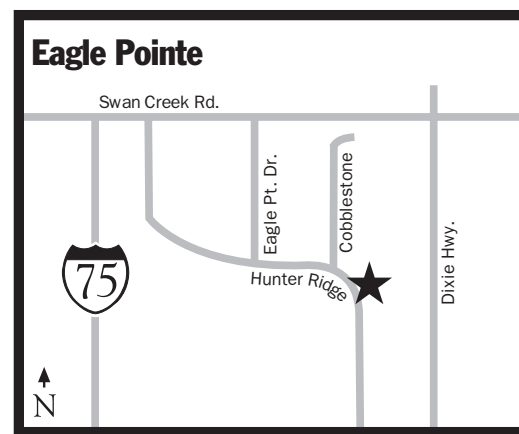
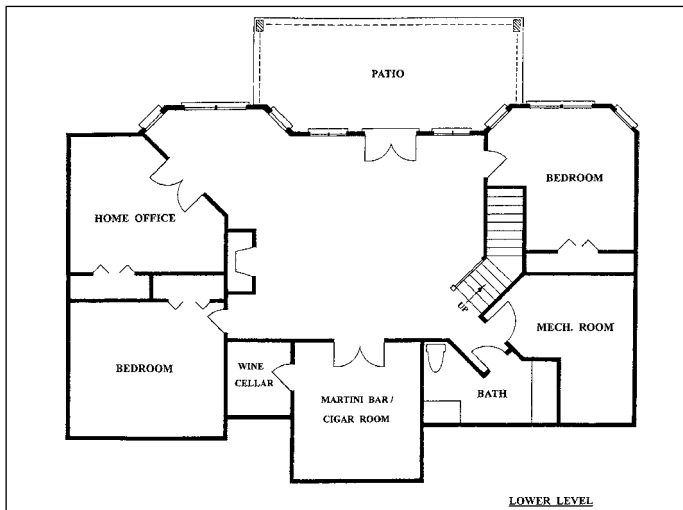
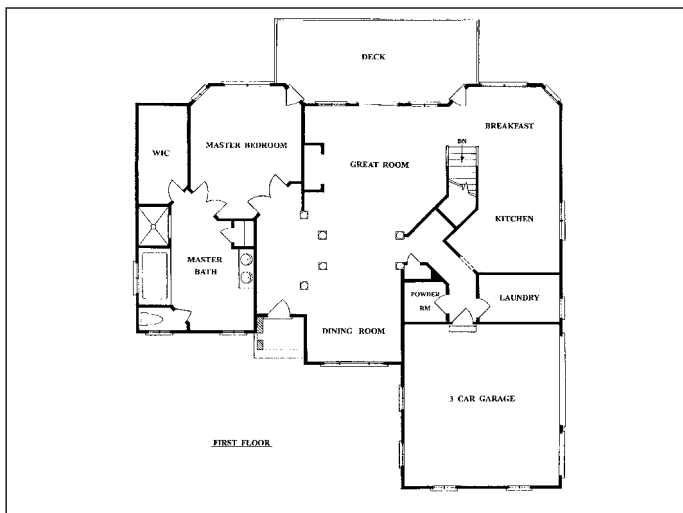
# Eagle Pointe

8430 Cobblestone Dr., Newport



## SUBCONTRACTORS

- ❖ Alex Hunter
- ❖ American Standard
- ❖ Built In Home Services
- ❖ Carter Lumber
- ❖ Contemporary Home Improvement
- ❖ Custer Auto Glass
- ❖ Dave's Complete Lawn Care
- ❖ David Arthur Consultants
- ❖ Don Russell Builders
- ❖ European Design
- ❖ Expert Heating & Cooling
- ❖ Finishers Unlimited
- ❖ General Shale Brick
- ❖ Heck Steel
- ❖ Homespun Furniture
- ❖ J & J Carpentry
- ❖ J. P. Jondro Plumbing
- ❖ Jenn-Aire
- ❖ Jerome Jacobs Concrete
- ❖ Jerry Stamp Gutter
- ❖ Jerry's Drywall
- ❖ Karen Sweat
- ❖ Karen Ogden - Designer
- ❖ Kuhlman Corporation
- ❖ Kyko Concrete Construction
- ❖ LaRoy Door and Contracting
- ❖ Lighting Gallery
- ❖ Master Carpentry
- ❖ Messina Concrete
- ❖ Monroe Aluminum Products
- ❖ Monroe Bank & Trust
- ❖ Munson & Sons Excavating
- ❖ Northcomm, Inc.
- ❖ Overhead Door, Inc.
- ❖ P & R Electric
- ❖ Pella Window Store
- ❖ Pure Pride Painting
- ❖ R. Welch Waterproofing
- ❖ Remington Floors
- ❖ Spackey Brothers
- ❖ The Kitchen Shop
- ❖ Thoma Trucking
- ❖ Tim Ott Masonry
- ❖ Wayne Wertenberger Tile



**Eagle Pointe Group, Inc.**  
**Don Anderson**  
**757 St. James Park**  
**Monroe, MI**  
**734-586-2086**  
**Fax: 734-586-4366**  
**Cell: 734-777-4941**

- 3 bedrooms
- 2 ½ baths
- Walk-out Lower Level
- Carrier 90+ furnace & cooling
- 2 ½ car attached garage
- 3,600 sq. ft.
- Pella windows
- Full brick & stone exterior
- KraftMaid cabinetry
- Concrete drive
- Hardwood/ceramic tile/carpet flooring
- 9' walk-out basement
- 2 fireplaces
- Painted trim
- Granite countertops

Today we consider home to be the center of our lives. This is where we live, laugh, love and many of us work as well. It is with great pride that Anderson Design Build Homes presents our 2005 Monroe HBA Parade Home. A team of carefully selected dedicated and caring professionals combine decades of experience and talent to create a home that not only meets, but exceeds your expectations. This spacious 3600 sq. ft. full brick and stone exterior home features Pella windows, KraftMaid cabinets, granite counter tops, hardwood floors, two fireplaces and a walkout lower level with coffered ceiling. The large master suite has an adjoining resort style master bath with every amenity imaginable. A home office along with a martini bar/cigar room and wine cellar located in the walkout lower level, makes room for working as well as entertaining family and friends. Anderson Design Build Homes strives to make the home building experience enjoyable. In effort to do so we provide the assistance of an experienced interior designer who guides you through the vast library of available selections and then draws the elements together

to create the home of your dreams. The designer of this home, Karen Ogden is the lead designer for Homespun Furniture. Karen has the recognition of designing many prestigious homes both locally and throughout the U.S. Aside from her residential accomplishments, Karen's work is visible in public spaces such as The Ritz Carlton, Dearborn and The Dearborn Inn, just to name a few. She also writes a monthly column, "Design Line" which is featured in The News Herald. Karen has collaborated with Anderson Design Build Homes with the design of this particular home and will continue designing for Anderson Design Build Homes new home owners.

This home is located in the prestigious Eagle Pointe Subdivision. Eagle Pointe offers everything you can imagine - 30.5 acres dedicated to wildlife preservation, 2 ½ miles of nature trails, bike paths, ponds, lakes, a basketball court and children's playground. This subdivision enhances your lifestyle by fulfilling your recreational needs. We look forward to your visit to Anderson Homes, where we know the difference between living and living well.