



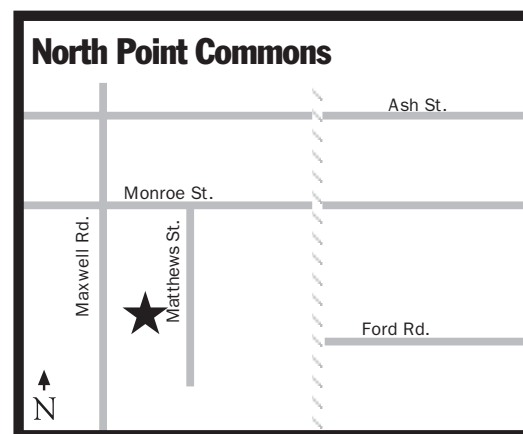
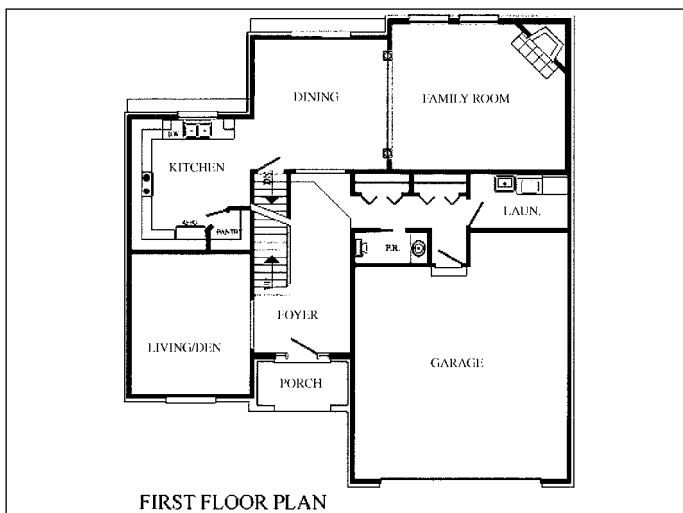
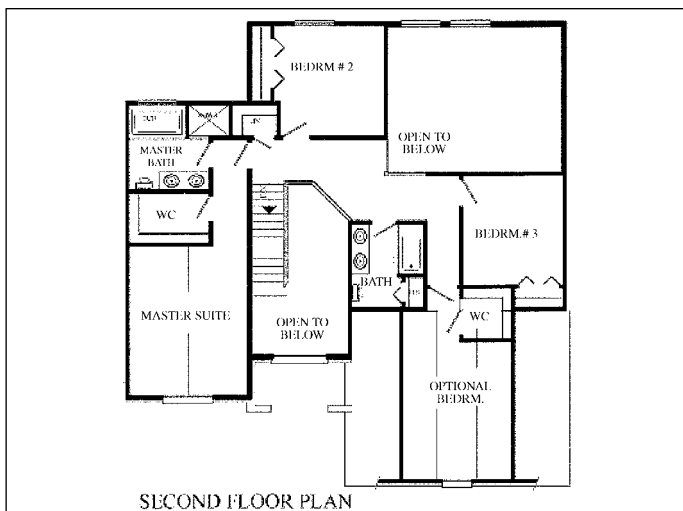
# North Point Commons

12371 Matthews, Carleton



## SUBCONTRACTORS

- ❖ American Heating & Cooling, Inc.
- ❖ Bren's Electrical Inc.
- ❖ Carpet Works
- ❖ Classic Stone, Marble & Granite, Inc.
- ❖ Dany's Hardwood Flooring
- ❖ Double Eagle Tile & Marble, Inc.
- ❖ Downriver Brick & Supply Co.
- ❖ Enterprise Painting
- ❖ Eric Christman & Sons
- ❖ F & M Cement Company, Inc.
- ❖ Fausto's Masonry Co., Inc.
- ❖ FireClass, LLC
- ❖ G & B Roofing, Inc.
- ❖ J.A. Carney Plumbing, Inc.
- ❖ Jan Overhead Door Mfg. Co., Inc.
- ❖ J/JW Foundations, Inc.
- ❖ Kurtis Kitchen & Bath Centers
- ❖ Mans Lumber & Millwork.
- ❖ Permanent Sash & Door Company, Inc.
- ❖ Sonic Security & Sound
- ❖ Stock Building Supply
- ❖ Triple Q, Inc.
- ❖ Valu-Walls, Inc.
- ❖ W.L. Winn & Associates, Inc.



**D. J. Maltese Consulting**  
**North Point Commons**  
**1007 W. Ann Arbor Trail**  
**Suite 100**  
**Plymouth, MI 48170**  
**734-737-0500**  
**Fax: 734-737-0505**

- 3 bedrooms
- 2 1/2 baths
- Forced Air furnace
- 2 car garage
- Premium vinyl windows
- Brick/vinyl exterior
- KraftMaid wood cabinetry
- Concrete drive
- Hardwood/carpet, Brazilian cherry flooring
- Full unfinished basement
- Fireplace
- Popular trim
- Granite countertops

- Case stone window surrounds
- Dimensional shingles
- 9' ceilings
- Vaulted two-story great room

Upscale elegant homes at affordable pricing are now available in Carleton, MI. Builders D.J. Maltese & Breault Homes are offering homes of a caliber seen in many of the northwestern pricier developments at very competitive pricing.

The homes include ranches, split level and two story homes. Amenities include full brick fronts with case stone window surrounds, dimensional shingles, aluminum trim and gutters, and premium vinyl windows. The interiors include full basements, Brazilian cherry hardwood flooring in the kitchen, hall and foyer, KraftMaid wood cabinets and granite countertops throughout. Features include 2 1/2 bathrooms, 2 car attached garage, first floor laundry in most plans, two story great room and many

other features usually found in custom homes. Very low down payment, no construction financing required. City water and sewer. Pick your lot and we'll build your home in 4 months or less. Several quick delivery homes are now available. The homes start in the low \$200s.