



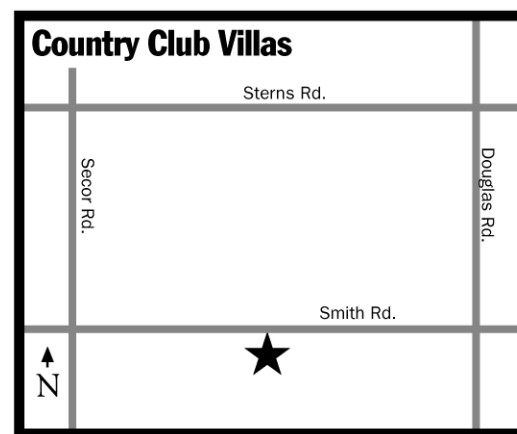
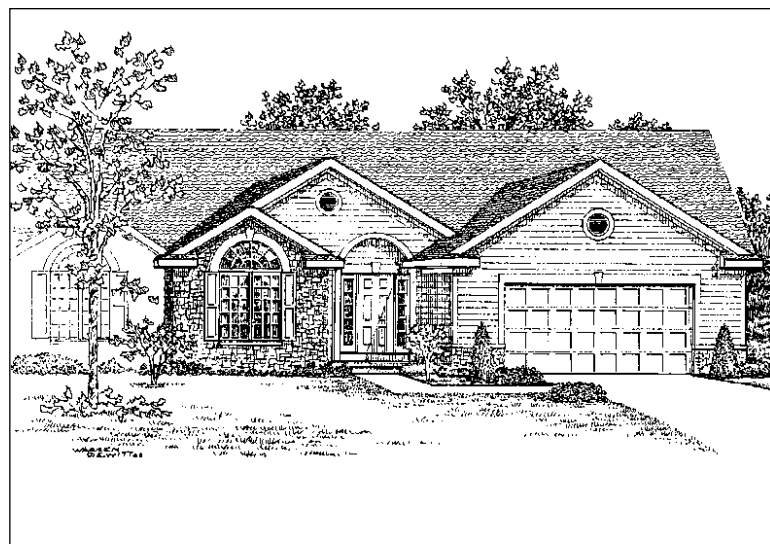
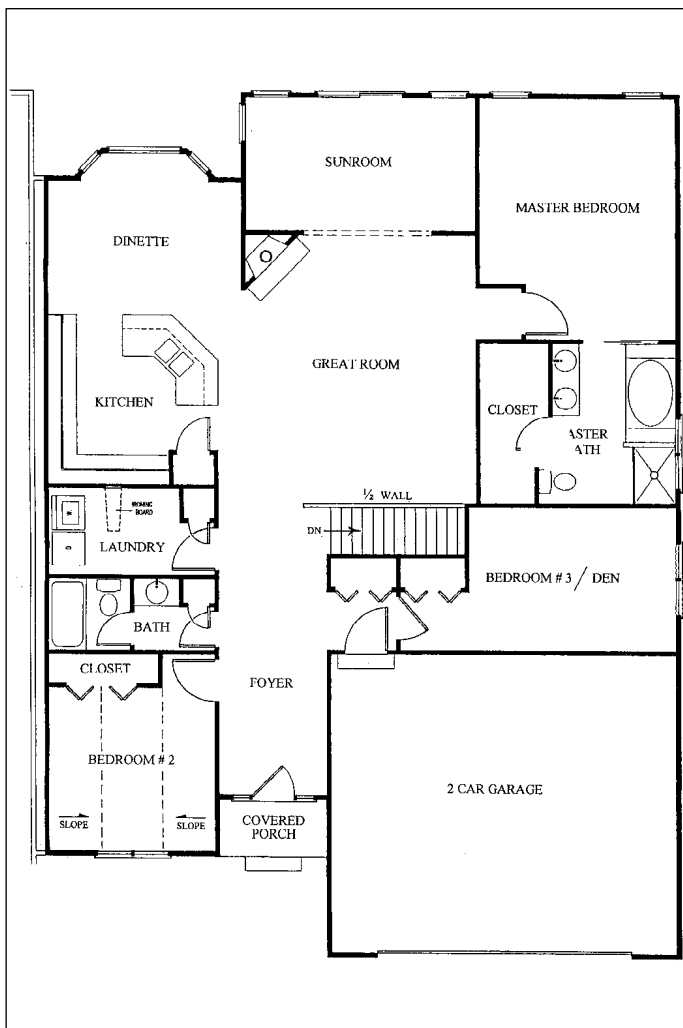
Country Club Villas

6499 Black Diamond Ln., Lambertville



SUBCONTRACTORS

- ❖ 84 Lumber
- ❖ J & J Contracting
- ❖ J. C. Potts
- ❖ K J Excavating
- ❖ Bill Bly & Associates
- ❖ Bruechert Concrete
- ❖ Carter Plastics
- ❖ Gallagher Custom Carpentry
- ❖ Grimes Builders Supply
- ❖ Home Builders Supply
- ❖ Infinity Electric
- ❖ John Metzger Tile
- ❖ Johnny Owsianowski
- ❖ Kolb Welding & Fabricating, Inc.
- ❖ KSI (Kitchen Suppliers, Inc.)
- ❖ Monroe Bank & Trust
- ❖ Nick Meisner Drywall
- ❖ Overhead Door, Inc.
- ❖ Precision Plus
- ❖ Rafferty & Schmitt Company
- ❖ Ray Warren Construction
- ❖ Residential Glass Service
- ❖ Storage System Services
- ❖ Sylvania Landscape
- ❖ Systems and Sounds
- ❖ The Vertical Blind Factory
- ❖ Thompson Plumbing, Heating & Air Conditioning
- ❖ Toledo Paving
- ❖ Tri-State Poured Walls
- ❖ Two Men & A Hammer
- ❖ Wolverine Concrete Products



Bedford Construction, Inc.
Country Club Partners
Bob Coberley/Mark Lajoie
3228 Chanson Valley
Lambertville, MI 48144
734-856-4661
Fax: 734-854-1412
Cell - Bob: 419-283-0828
Cell - Mark: 419-351-2123

- 3 bedrooms
- 2 baths
- Condo services
- Gas furnace
- 25'x22' garage
- 2,150 sq. ft.
- Carefree windows
- Stone/vinyl exterior
- Merillat cabinetry
- Blacktop drive
- Tile/carpet flooring
- Full basement

- Fireplace
- Aluminum trim
- Solid surface countertops
- Sunroom

Enjoy country club living in one of Bedford's fastest-growing condominium developments. Relax by our resort-type pool. This 3 bedroom, 2 bath, 2150 square foot condominium is elegant in design and style. Enjoy the view from the sunroom or dining area directly overlooking the 17th fairway at the neighboring Maple Grove Golf Course. From the vaulted ceilings, to the tile floor, this home is built with your needs in mind. Never again rake, shovel or paint. With Country Club Villas, you can relax and enjoy what life has to offer.