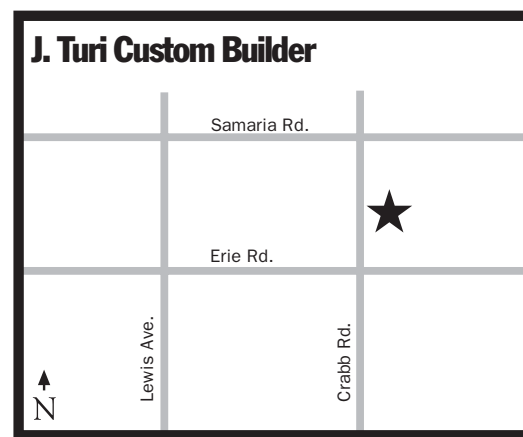
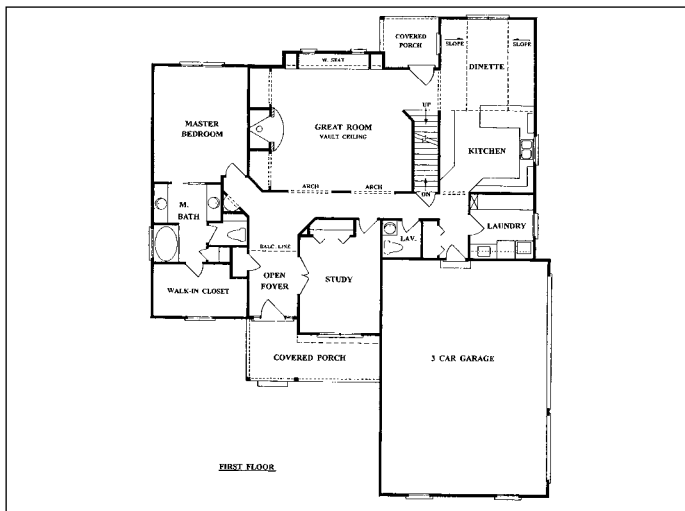
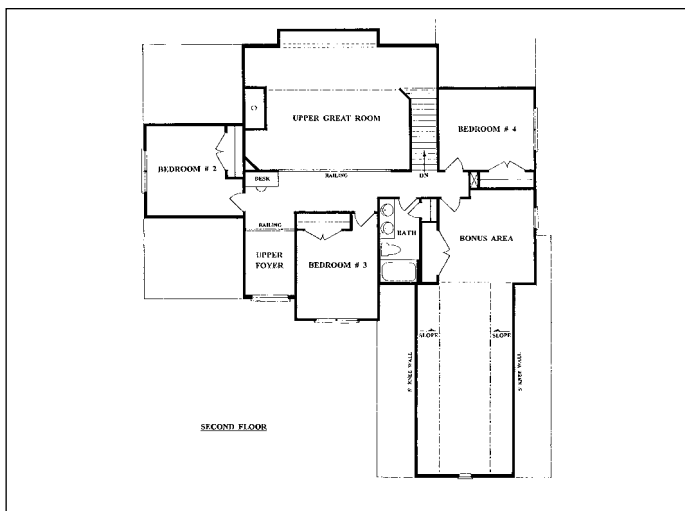




10216 Crabb Rd., Temperance

SUBCONTRACTORS

- ❖ American Land Surveying and Engineering, Inc.
- ❖ C.M. Smith Sand & Stone
- ❖ Carpets by Otto
- ❖ Casework Countertops
- ❖ CPS Securities
- ❖ Easy Living Concepts
- ❖ Exterior Wall Design
- ❖ Finishers Unlimited
- ❖ High Point Painting Ltd.
- ❖ Jamieson's Audio/Video
- ❖ Jennite Company
- ❖ Joe DiMasso Framing
- ❖ Kayo Lumber Co., LLC
- ❖ Kolar Electric
- ❖ Kolb Welding and Fabricating
- ❖ Lighting Gallery
- ❖ Modern Builders Supply, Inc.
- ❖ Nick Meisner Drywall, Inc.
- ❖ Overhead Door, Inc.
- ❖ Residential Design
- ❖ Robert K. Steinecker
- ❖ Scott Landscaping & Irrigation
- ❖ Stevens Disposal
- ❖ Sumner Siding
- ❖ Thompson's Plumbing, Heating & Air Conditioning
- ❖ Toledo Anderson's General Store
- ❖ Tri-County Block & Brick
- ❖ Tri-state Concrete
- ❖ Two Men and a Hammer
- ❖ Willcrest Concrete, Inc.
- ❖ Wright Excavating



J. Turi Custom Builder, LLC
Jeff Turi
3362 Quail Hollow
Lambertville, MI 48144
734-856-8874
Fax: (same)
Cell: 419-392-5383

- 4 bedrooms
- 2 1/2 baths
- 1.44 acres (250x250) lot
- Bryant 90+ furnace
- 3 car garage
- 3,027 sq. ft.
- Andersen windows
- Stone/cement board/vinyl siding exterior
- KraftMaid maple cabinetry
- Blacktop drive
- Tile/carpet flooring
- Full basement

- Gas or wood fireplace
- Poplar paint & stain trim
- Granite countertops

Built by J. Turi Custom Builder this stunning 3027 sq. ft., 2 story with 4 bedrooms and room to expand offers a functional custom design with exquisite details on a country 1.5 acre lot.

The majestic cultured stone exterior and 3 car side load garage are impressive as you approach the covered front porch. Once inside, the 2 story foyer greets you with a paneled, lighted archway. The 1st floor master suite offers his-and-her vanities, heated tile floors and a nice-sized walk-in closet. The beautiful and dramatic maple kitchen with granite top gives a warm and inviting feel with its large peninsula and custom lighting. The two story great room features a second floor overlook, custom built-ins, oversized fireplace and a huge window bench seat which gives way to plen-

ty of storage or display. Three (3) additional bedrooms on the second floor with a huge 2 room bonus area equipped with a home theater allow for plenty of spaces for the family to be entertained. Additional features are the custom in-home office, large first floor laundry room with clothes chute, huge full basement with upgraded mechanicals, all 9' and vaulted ceilings on the main floor, central vacuum system, security system, whole house sound system, solid panel doors, arched openings, and architectural moldings throughout all make this home one you'll want to be sure and visit. Call Jeff Turi at 734-856-TURI to design and build your custom home!